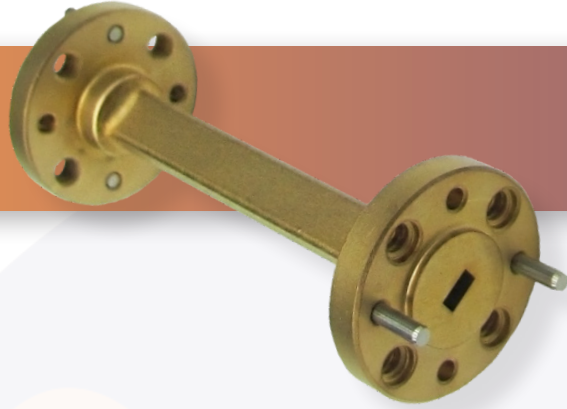


Part No:

# HWSS06-4.0-ER



## WR-06 Millimeter Waveguide Straight Section 4 inch - 110 GHz to 175 GHz, D-Band



The HASCO **HWSS06-4.0-ER** is a WR-06 Millimeter Waveguide Straight Section that operates from 110 GHz to 175 GHz. This WR-06, waveguide section is constructed with a Round UG-387/U-M Flange.

HASCO rectangular waveguides are manufactured from brass, OFHC copper, aluminum or coin silver. Waveguides have significant advantages over coaxial transmission in power handling, insertion loss and signal integrity (leakage and electromagnetic interference - EMI).

HASCO offers a series of millimeter waveguide straight sections, E-Bends, H-Bends and 90° Twists. Anti-cocking flanges available if required. All are available in standard and custom lengths covering the waveguide sizes WR-3, WR-4, WR-5, WR-6, WR-8, WR-10, WR-12, WR-15, WR-19, WR-22, WR-28, WR-34 and WR-42. Square waveguide flanges are available in WR-22, WR-28, WR-34 and WR-42. Please contact HASCO for custom options.

### Electrical

• Impedance	50 Ohms
• Frequency Range	110 to 175 GHz
• VSWR	1.03:1 Max
• Waveguide	WR-06
• Band	D-Band

### Mechanical

• Flange	Round UG-387/U-M
• Length	4.0 inch

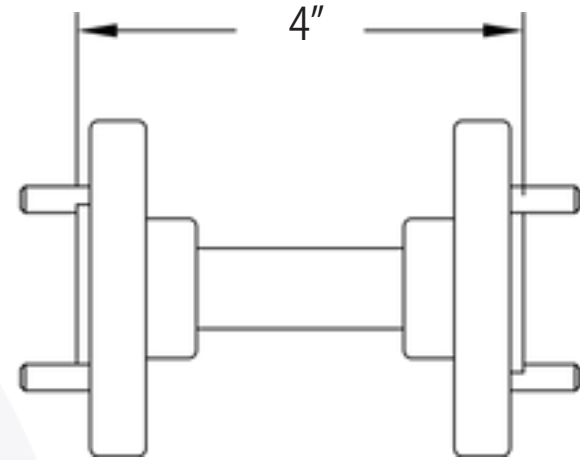
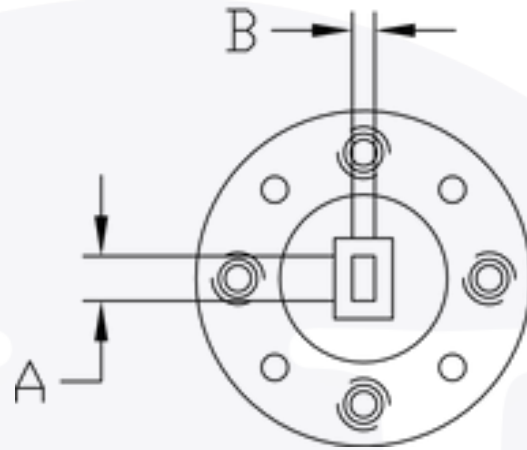
### Environmental

• Temperature Range	200°C Max
---------------------	-----------

### Material

• Waveguide	OFHC
• Flange	Brass
• Finish	Gold Plated PER MIL-DTL-45204

# WR-06 Waveguide Straight Section, 4 inch | 110 - 175 GHz | Outline Drawing



Part Number	WG Size	DIM A	DIM B
HWSS22-X.X-ER	WR-22	0.224	0.112
HWSS19-X.X-ER	WR-19	0.188	0.094
HWSS15-X.X-ER	WR-15	0.148	0.074
HWSS12-X.X-ER	WR-12	0.122	0.061
HWSS10-X.X-ER	WR-10	0.100	0.050
HWSS08-X.X-ER	WR-08	0.080	0.040
HWSS06-X.X-ER	WR-06	0.065	0.0325
HWSS05-X.X-ER	WR-05	0.051	0.0255

LTR	DESCRIPTION	DATE	APPR.	DRAWN BY: NS	REVIEWED BY: JS
-	RELEASE	7/24	TC		APPROVED BY: TC
				THESE DRAWINGS AND SPECIFICATIONS ARE THE PROPERTY OF HASCO COMPONENTS AND SHALL NOT BE REPRODUCED, COPIED NOR USED - IN WHOLE OR IN PART - AS THE BASIS FOR THE MANUFACTURE OR SALE OF OTHER ITEMS WITHOUT THE EXPRESS, WRITTEN PERMISSION OF HASCO COMPONENTS.	
THIS DRAWING IS A CONTROLLED DOCUMENT					



5214 Bonsai Street • Moorpark, CA 93021  
 (888) 498-3242 • sales@hasco-inc.com  
[www.hasco-inc.com](http://www.hasco-inc.com)

MATERIALS:  
 SEE DATA SHEET

CAGE CODE:  
 OT8L4

SCALE:  
 N/A

SIZE:  
 A

FINISHES:  
 SEE DATA SHEET

PART NO./DRAWING NO.

**HWSS06-4.0-ER**

REV:  
 -