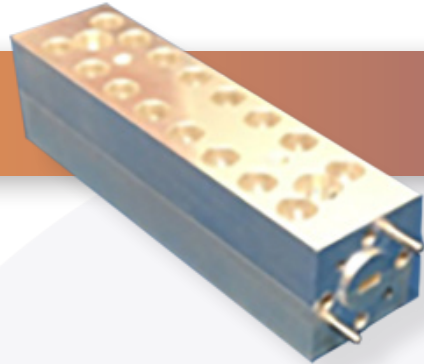


Part No:

BSF-W-60000-1000-8-15-I



WR-15 V-Band Band-Stop Filter - 60 GHz

Features

- Very Narrow Rejection Bandwidth
- Low Pass-Band Insertion Loss

The BSF-W-60000-1000-8-15 is a WR-15 V-Band Band Stop Filter with a very narrow rejection band. It provides >50 dB rejection at 60 GHz and has very low pass-band insertion loss. The majority of the pass-band has >20dB return loss. Input and output are WR-15 UG385/U

Electrical

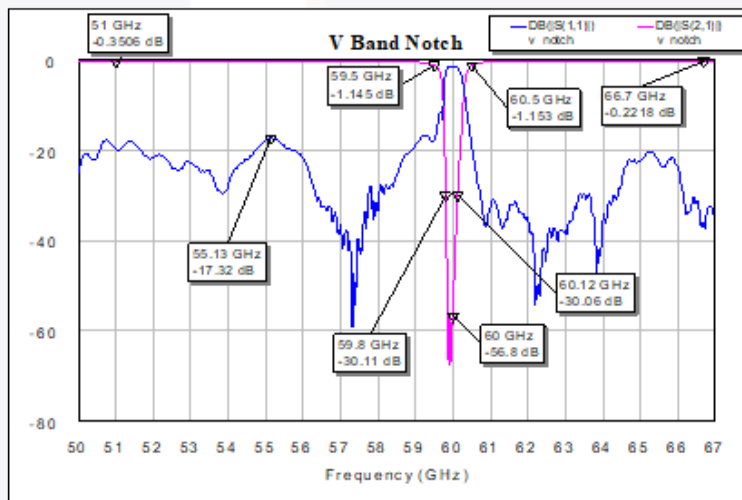
- Pass-Band Frequency 50-59.5 GHz, 60.5 to 67 GHz
- Insertion Loss < 0.4 dB
- 3 dB Frequency Points 60 GHz \pm 350 MHz
- Return Loss > 20 dB Most of Pass-Band
- Rejection @ 60 GHz > 50 dB
- Rejection @60GHz \pm 100 MHz > 30 dB

Environmental

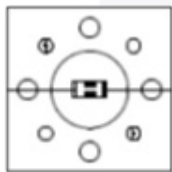
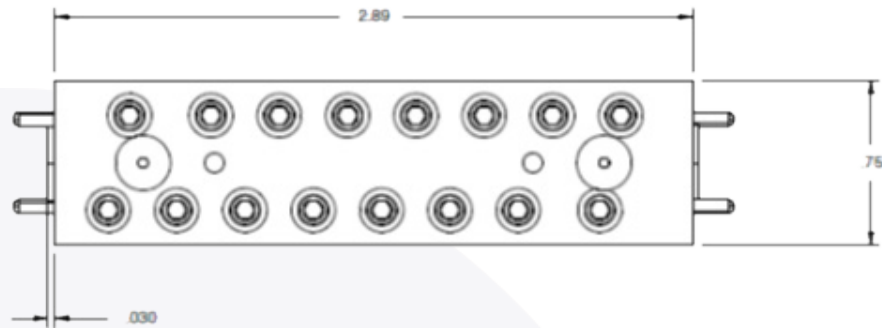
- Temperature Range -50°C to 85°C (operational)

Material

- Body Invar



WR-15 V-Band Band-Stop Filter | DC - 60 GHz | Outline Drawing



WR15 WAVEGUIDE
UG385/U



LTR	DESCRIPTION	DATE	APPR.	DRAWN BY: NS	REVIEWED BY: JS
-	RELEASE	12/16	TC		APPROVED BY: TC
A	SPEC UPDATE	1/25	TC	THESE DRAWINGS AND SPECIFICATIONS ARE THE PROPERTY OF HASCO COMPONENTS AND SHALL NOT BE REPRODUCED, COPIED NOR USED - IN WHOLE OR IN PART - AS THE BASIS FOR THE MANUFACTURE OR SALE OF OTHER ITEMS WITHOUT THE EXPRESS, WRITTEN PERMISSION OF HASCO COMPONENTS.	
THIS DRAWING IS A CONTROLLED DOCUMENT					



5214 Bonsai Avenue • Moorpark, CA 93021
(888) 498-3242 • sales@hasco-inc.com
www.hasco-inc.com

MATERIALS: SEE DATA SHEET	CAGE CODE: OT8L4	SCALE: N/A	SIZE: A
FINISHES: SEE DATA SHEET	PART NO./DRAWING NO. BSF-W-60000-1000-8-15-I		REV: A