

## MHMF101 Modular Mounting Kit

Mounting solutions custom for DAXXX-series distribution amps

### Key Features

- Versatile Mounting Options
- Modular/Interconnectable
- Supports Daisy Chain Functionality
- Stable Benchtop Use
- Custom-designed for DAXXX-series

### Applications

- Modular Test Systems
- Lab Frequency Distribution
- Benchtop Experimentation
- Troubleshooting



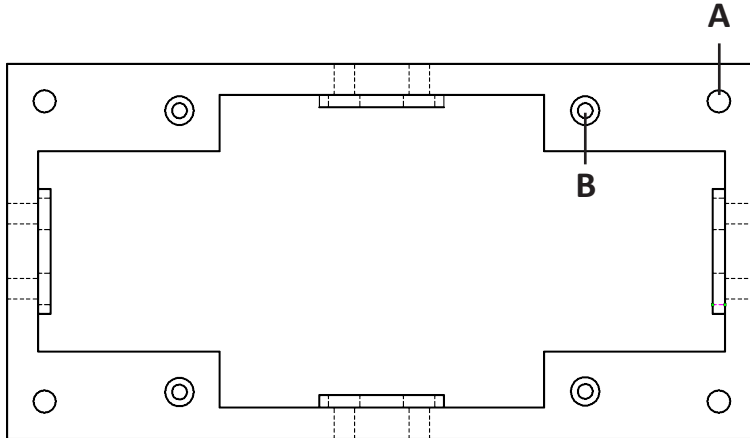
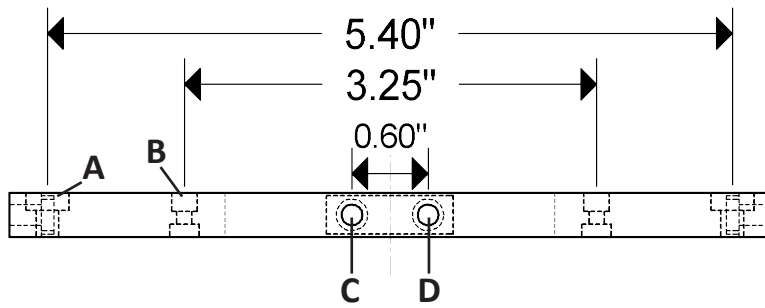
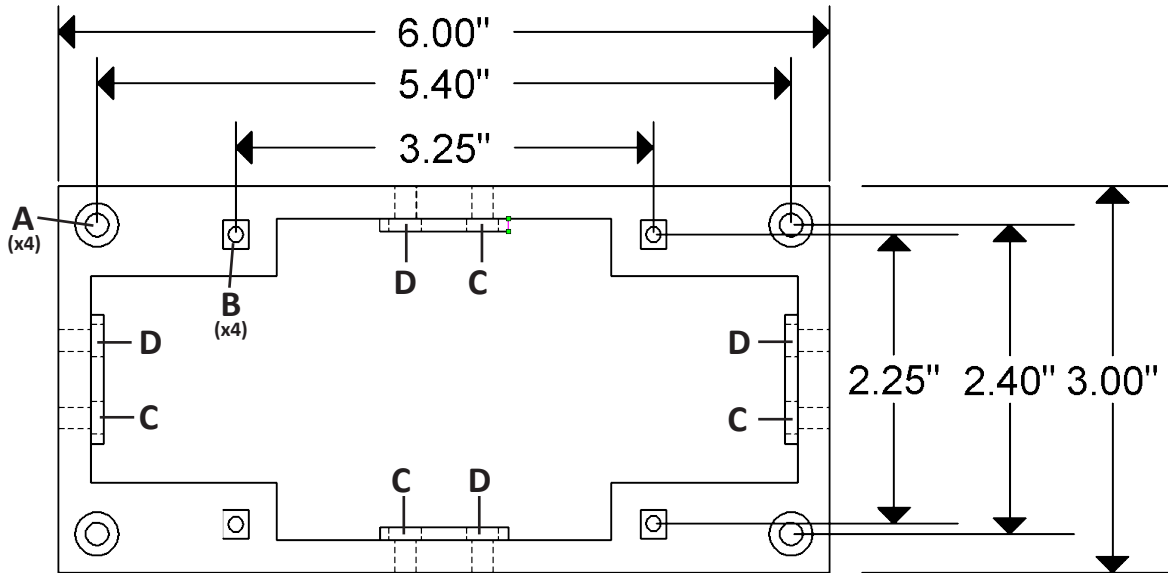
### Functional Description

The MHMF101 Modular Hardware Mounting Fixture is a companion product designed to facilitate the installation and configuration of our DAXXX Series Distribution Amplifiers. The MHMF101 provides a robust mounting solution that ensures secure positioning of your distribution amplifiers within various operational configurations.

The inclusion of M3 threaded inserts in the side walls enables the MHMF101 fixtures to be attached to one another, simplifying the daisy-chaining of multiple DAXXX distribution amplifiers. It also allows for their easy inclusion into more complicated setups utilizing other mounting fixtures in the MHMFXXX family. This modular capability allows for easy system expansion, accommodating growing needs while maintaining a neat and organized setup.

In addition to its modular capabilities, the MHMF101 offers flexible mounting options to accommodate a diverse range of installation needs. With the ability to be securely mounted on walls, the sides of chambers, or any surface with a compatible bolt pattern, the MHMF101 provides a reliable method for securing your DAXXX-series amplifiers in a wide range of applications. Moreover, the MHMF101 serves as a stable platform when utilized on a benchtop, mitigating the issue of equipment displacement due to cable drag. This is especially beneficial in scenarios where frequent cable adjustments could inadvertently shift sensitive equipment, increasing the ease with which your setup can be kept intact and operational.

**Mechanical Specifications:**



Screw Hole Dimensions	
Hole Type	Dimensions
A	$\varnothing$ 0.18" THRU [ ] : $\varnothing$ 0.34" $\downarrow$ 0.14"
B	$\varnothing$ 0.12" THRU [ ] : X: 0.22" Y: 0.2" $\downarrow$ 0.15" [ ] : $\varnothing$ 0.23" $\uparrow$ 0.14"
C	M3 threaded insert
D	$\varnothing$ 0.165" THRU [ ] : $\varnothing$ 0.23" $\downarrow$ 0.100"

All dimensions are in inches with a tolerance of  $\pm 0.020$ "

## Ordering Information:

# MHMF-101-A



Standoff Length	
DASH #	Configuration
A	0.5"
B	0.75"
C	1"

### Parts included in kit:

- 1x MHMF101 mounting bracket
- 4x 4-40 F-F 3/16" hex spacers of user-specified length (0.5", 0.75", 1")
- 8x 1/4" 4-40 black Oxide phillips-head pan screws
- 4x M3 x 12 pan head screws
- 4x #8 1-1/2" long brass wood screws

### Compatible with:

- DA100 Series Distribution Amplifiers
- DA200 Series Distribution Amplifiers
- DA300 Series Distribution Amplifiers
- DA400 Series Distribution Amplifiers
- DA500 Series Distribution Amplifiers